

# CERL

## Hand Press Book Manuscript Databases

**Elmar Mittler**

**Prof. of book-and library sciences**

**Past director of Goettingen State and University Library**

**Budapest 10. March 2007**





NIEDERSÄCHSISCHE STAATS- UND  
UNIVERSITÄTSBIBLIOTHEK GÖTTINGEN



# The Future with Tradition

## The Göttingen State and University Library



GEORG-AUGUST-UNIVERSITÄT  
GÖTTINGEN



# CERL

## Consortium of European Research Libraries

- The Consortium was formed in 1994 on the initiative of leading research libraries in many European countries.
- CERL's logo is based on the printer's device of the 16<sup>th</sup>-century Estienne (Stephanus) family in Paris and Geneva
  - It represents the tree of knowledge (olive), with a branch dropping to earth



# CERL's mission

- to record **the European printed heritage**: all books printed in Europe during the hand-press period, i.e. before c.1830, in the Hand Press Book database.
- **cross-searching of manuscript databases** (pilot project 2004)
- provide **support and resources for rare books specialists** (librarians and scholars).
- CERL's ***Development Plan 2002–2007*** is available on the web



# CERL Membership

- CERL currently has 42 full members, 28 other members, and 89 'cluster' libraries attached to a full member.
- Members in 17 European countries and the United States

Belgium

Croatia

Denmark

Finland (2)

France (3)

Germany (3)

Hungary (6)

Italy (9)

Latvia

Lithuania

Luxemburg

The Netherlands

Portugal

Russia (2)

Spain

Sweden (2)

United Kingdom (5)

US



# Hand Press Book database

The HPB database now combines

- c. 2,500,000 bibliographic records
- compiled from 24 files
- contributed by 21 institutions
- in 13 countries, 12 European and the US

<http://www.cerl.org/HPB/hpb.htm>

**More records are added each year**



# Access to the HPB

- <http://eureka.rlg.org>  
via member libraries
- Z39.50 connection (Zephyr)
- Migration to OCLC this year



# CERL Thesaurus

- Contains variant forms of names of
  - imprint places
  - imprint names
  - personal names
  - corporate names
  - links to printers' devices
- CERL is starting
  - links to provenance information
- The CERL Thesaurus is used to support Assisted Searching on the HPB database





# CERL Thesaurus

	<i>1/3/05</i>	<i>5/3/04</i>	<i>11/3/03</i>	<i>12/6/02</i>
<i>Personal Names</i>	594,289	85,948	62,436	12,173
<i>Corporate Body Names</i>	3,725	1		
<i>Imprint Names</i>	13,812	13,804	12,252	6,068
<i>Imprint Places</i>	3,599	3,642	3,624	2,808
<i>Sources</i>	2,104	15	11	3
<b>Total number of records</b>	<b>617,529</b>	<b>103,410</b>	<b>78,325</b>	<b>21,037</b>



# CERL Thesaurus

**The CERL Thesaurus is freely  
available on**

**<http://www.cerl.org/Thesaurus/thesaurus.htm>**



# CERL Manuscripts Portal

- cross file searching on large manuscript repositories on the Internet;
- chronological limiting;
- combined searching on Manuscripts and Early Printed material;
- ultimately combines this primary material with secondary material (articles, references to scholarly texts, etc.).



# Harvested by OAI

## *Open Archives Initiative protocol*

### **Manuscript files, integrated index, locally stored**

- AU – National Library of Australia (c. 8,300)
- CZ – Manuscriptorium – manuscripts (c. 875)
- PT – National Library of Portugal (c. 3,000)
- SE – Ediffah, Swedish personal archives (c. 6,850)
- SE – Uppsala UL, Waller collection (c. 24,000)
- US – Columbia UL, Digital Scriptorium (c. 2,000)

### **Printed material files, locally stored**

- CZ – Manuscriptorium – prints (c. 65,000)



# Searched on the fly

## *Z39.50 protocol*

### **Manuscript files, search by remote access**

- DK – Royal Library of Denmark (c. 13,000)
- UK – National Library of Scotland (c. 10,000)

### **Printed material files, search by remote access**

- INT – CERL HPB (c. 1,600,000)











# CERL

CERL also offers its members access to the

- English Short-Title Catalogue  
(c. 468,647 records)
- RLG Union Catalog  
(c. 139,181,298 records)



# New culture of internet-research and -librarianship

- Collaboration and collaboratories are in progress; digitizing as a challenge
- Sharing responsibilities – branding - embedding shared services into local websites – realize immediate access
- Using new technical means like grid-technology





# Virtuelle Welten – das Mittelalter geht online

Die deutsche „Bibliotheca Palatina“ wird vollständig digitalisiert

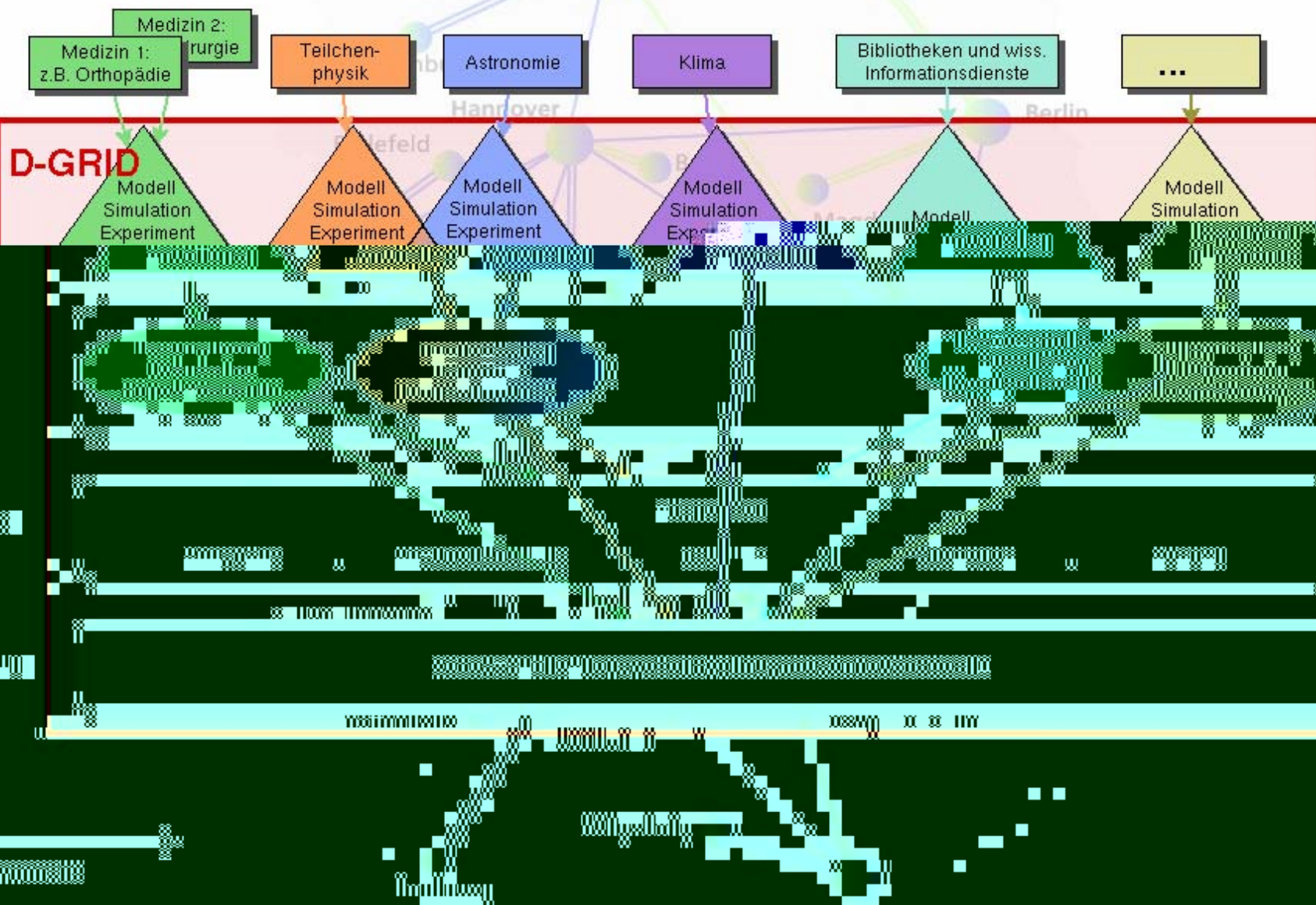
„Dies ist ein Projekt, das international seinesgleichen sucht“ Auch den Vatikan im Blick / von Johannes Schnurr



# D-Grid: e-Science Framework

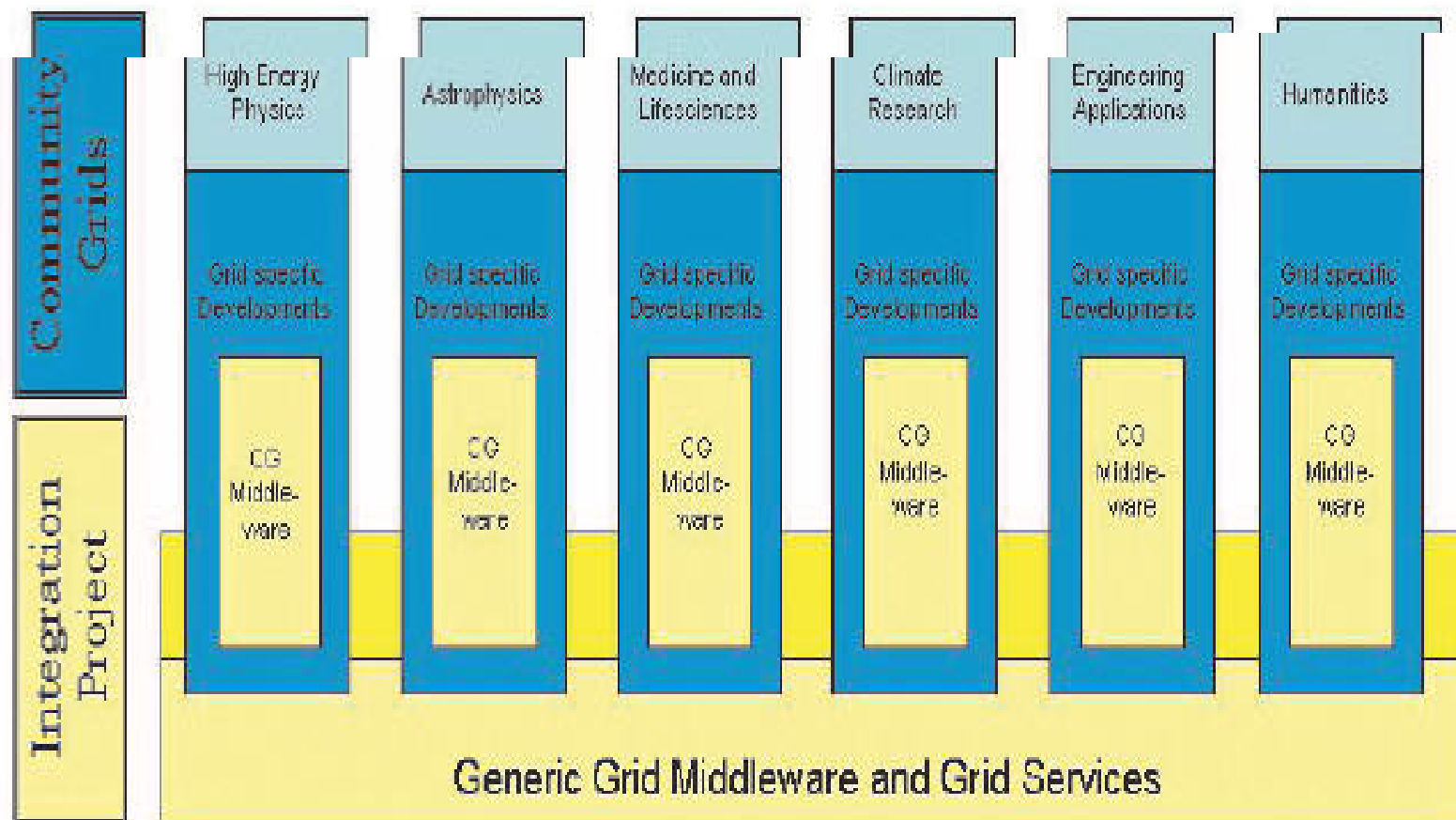
Community:

e-Science:





# The D-Grid consortium



Carmen-Budapest



NIEDERSÄCHSISCHE STAATS- UND  
UNIVERSITÄTSBIBLIOTHEK GÖTTINGEN

# TextGrid: InfoCenter Links



**Textgrid**  
ein Forschungsprojekt des D-GRID  
Entwicklung eines Community-Grid für  
textbasiert arbeitende Disziplinen



DE

Home

About TextGrid

Partner

Workpackages

InfoCenter »

News

Events

Links

Press

FAQ

Masthead



[InfoCenter](#) » » [Links](#)

no news in this list.

the [D-Grid Initiative](#),  
triggered through the [eScience Call 2004](#)

Federal Ministry of Education and Research ([BMBF](#)):

[eScience Initiative](#)

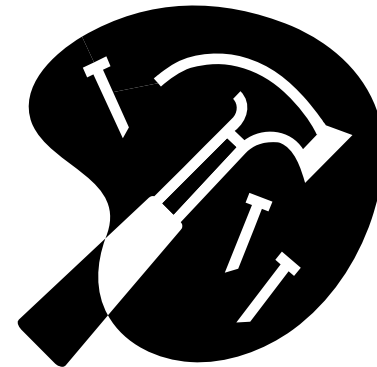
[eScience Forum](#) (German)

TextGrid in the [DL Forum](#)

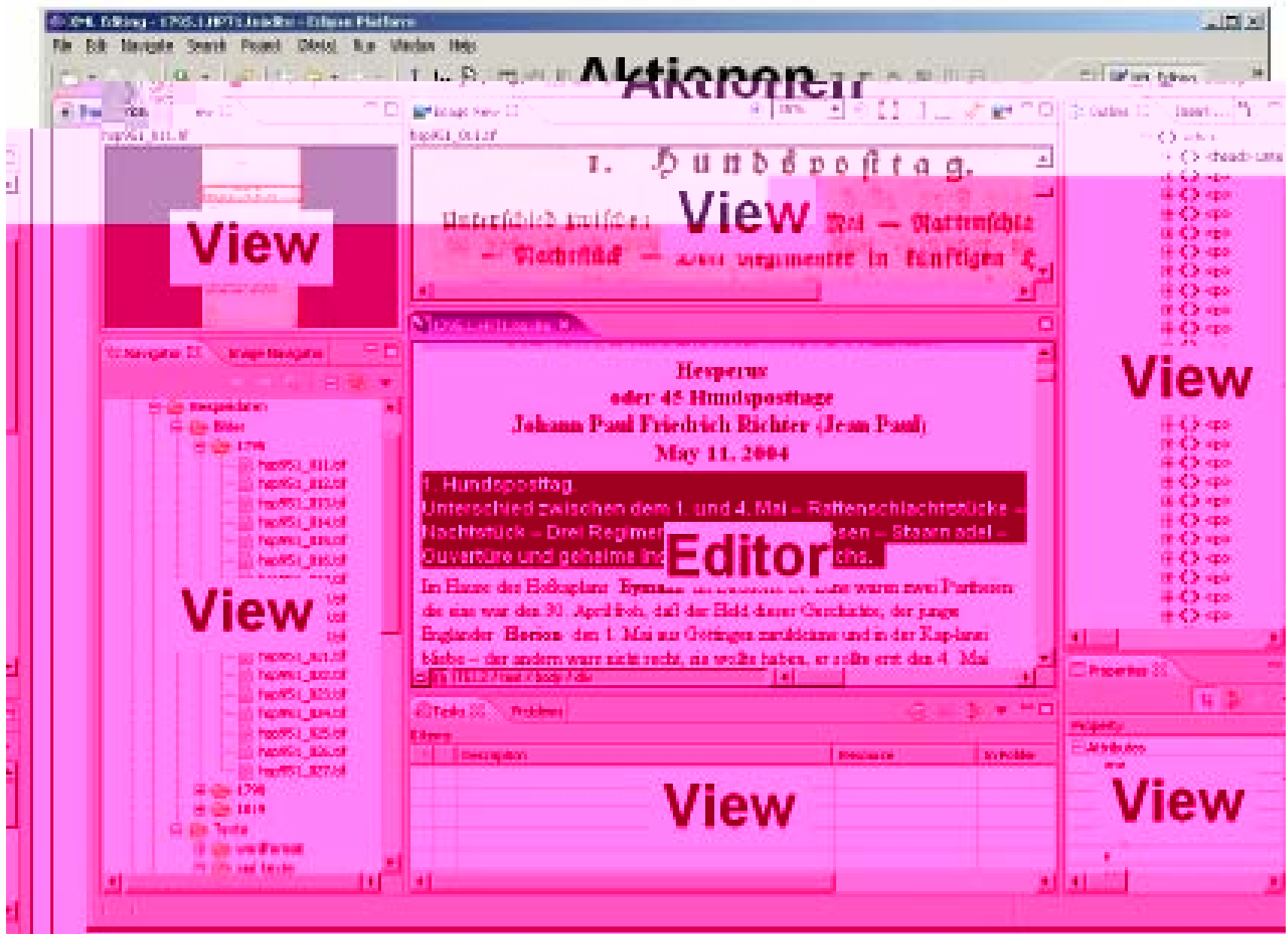
[top](#)

# TextGrid Workbench

1. Publishing
2. Text Processing
3. Text Retrieval
4. Linking
5. Workflow

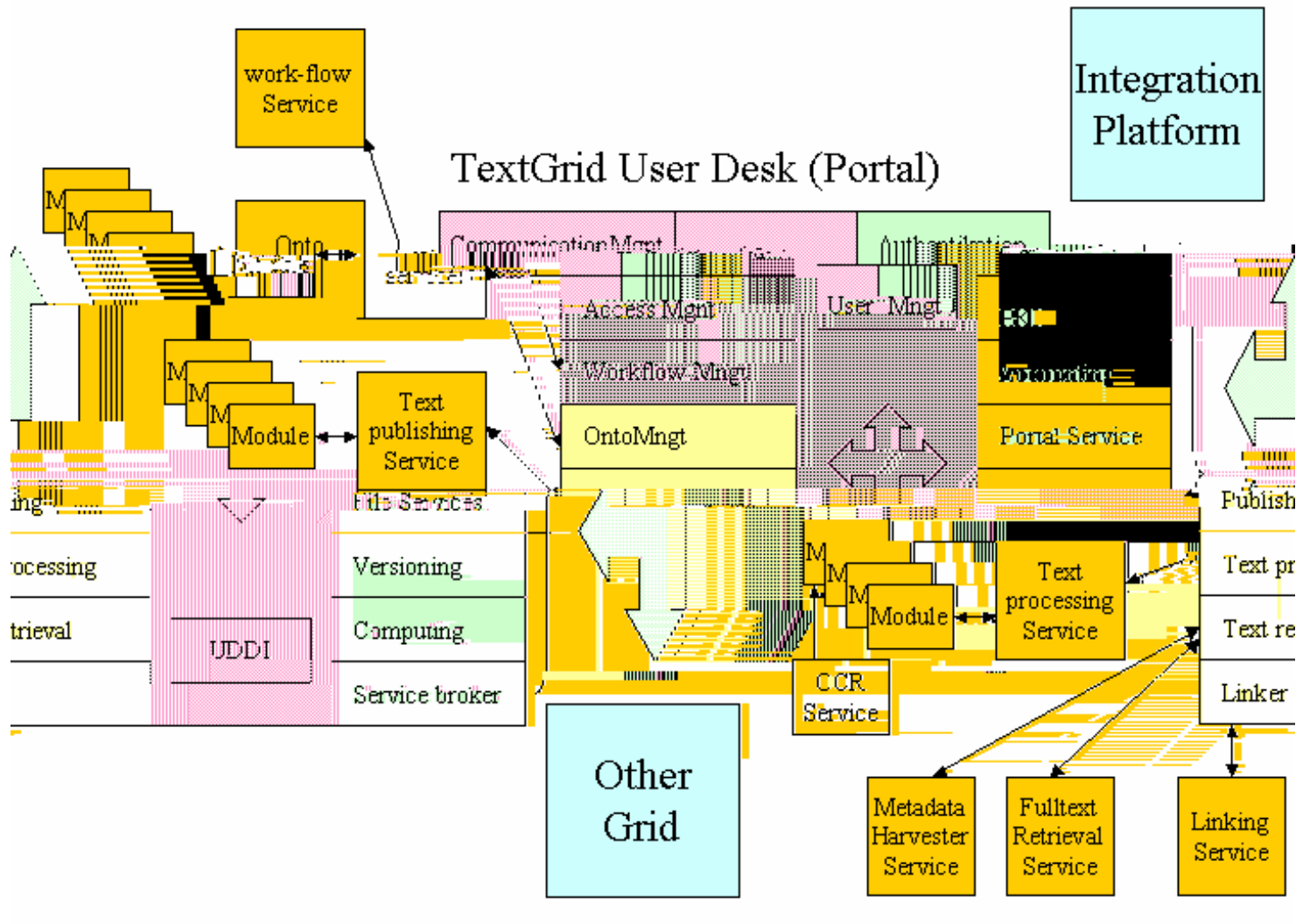






# Textgrid-architecture:

## Tools for grid-editing and grid-philology



# Libraries as global infrastructure

- for academic communication (OAI)
- for quality services (metadata sharing)
- for access (portals)
- for online delivery of digital and digitised material
- for digitising on demand
- for printing on demand
- for archiving
- for the collaborative research environment



# CERL

## Contact information

[www.cerl.org](http://www.cerl.org)

Membership

[D.J.Shaw@cerl.org](mailto:D.J.Shaw@cerl.org)

Information about the HPB / CERL Thesaurus:

[MarianLefferts@cerl.org](mailto:MarianLefferts@cerl.org)

CERL Manuscripts Portal

[Liesbeth.Oskamp@cerl.org](mailto:Liesbeth.Oskamp@cerl.org)

Chairman

[elmar@mittler.de](mailto:elmar@mittler.de)



# Digital Resources

The following collection has been digitised and linked to the CERL Thesaurus:

- Ronald B. McKerrow, *Printers' & Publishers' Devices in England & Scotland 1485-1640* (London, 1913) – [http://www.kb.dk/elib/bhs/mckerrow\\_files/index.htm](http://www.kb.dk/elib/bhs/mckerrow_files/index.htm) and *CERL Newsletter* 9 (June 2004).

Work on the following collection is in progress:

- Philippe Renouard, *Les marques typographiques parisiennes des 15e et 16e siècles* (Paris, 1926).

The CERL Thesaurus also links to printers' devices made available through:

- EDIT 16: *Censimento delle edizioni italiane del XVI secolo* <http://www.edit16.iccu.sbn.it>.

The following publication is currently under consideration

- H. L. Baudrier, *Bibliographie lyonnaise: recherches sur les imprimeurs, libraires, relieurs et fondeurs de lettres de Lyon au XVIe siècle* (1895–1952)



universiteter

- papers/Bjornasfpenaess

earnittasiteter

- pre-prints